

Advanced  
accounting  
software  
for growing  
businesses



## Supplier Payments

Suppliers can be paid by electronic payment, automated cheque, or other method (such as cash or manual cheque). The default method of payment can be set for each supplier, although this may be overridden at the time of posting a payment.

Cheques can be printed either individually or in a batch. A choice of pre-designed cheque formats is available, including one cheque to a page or three cheques to a page.

Electronic payments can be made by generating an electronic payments file in a format compatible with your company's BACS system. File formats are supported for most UK major banks.

## Bill of Materials

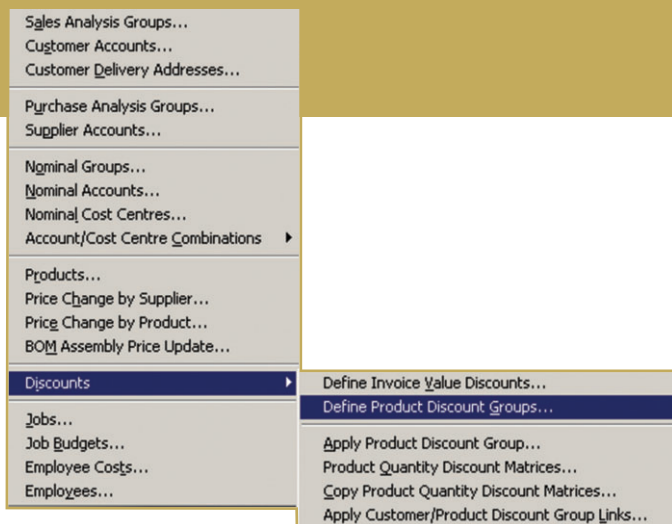
With Bill of Materials (BOM), you can define a product as an assembly of other stock items, with up to 10 levels of sub-assemblies, and up to 100 stock items (components) per assembly.

You may specify the overhead cost of each assembly and allow the system to automatically calculate its price based on its component prices and overhead cost.

You can also:

- Specify whether the assembly build is to occur immediately or over a prolonged period. Prolonged builds allow a simple implementation of "work in progress".
- Receive and cancel assemblies; stock levels are then automatically adjusted.
- Report on build qualities, work in progress valuation etc using any of the 13 BOM-specific reports.

Capital Gold has been specifically designed with ease of use in mind. It's intuitive and easy to learn, whilst still providing the powerful functionality growing businesses need to stay ahead of the competition.



## Discounts

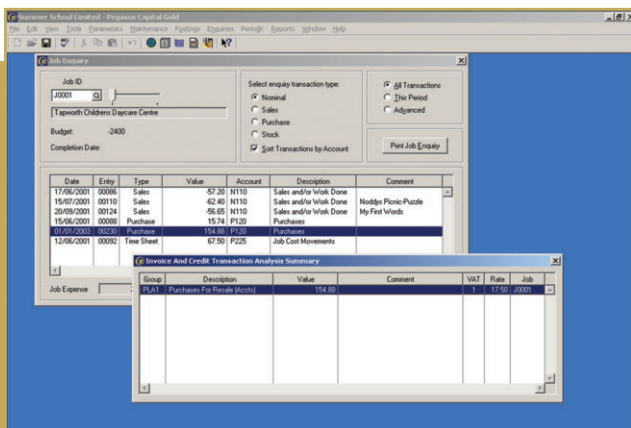
A comprehensive range of features allows discounts to be applied to customers, products, combinations of the two, and suppliers.

- Settlement discount: 2 levels of settlement discount can be applied to each customer, allowing customer payments to be discounted if paid within a certain number of days.
- Quantity (Line) discount: allows a percentage discount to be applied to each line of an SOP document.
- Customer (Overall) discount: allows a discount percentage to be applied to the total value of an SOP document.
- Invoice Value discount: allows a discount percentage to be applied to the total value of an SOP document, the discount percentage being dependent upon the value of the document.
- Quantity Discount Matrix: a comprehensive matrix of discounts, allowing percentage discounts to be applied for each customer, for up to 20 discount groups. Each product belongs to a discount group, and can have up to 5 discount tables, each of which can have up to 10 quantity break discounts.
- Settlement discount: 2 levels of settlement discount can be applied to each supplier, allowing supplier payments to be discounted if paid within a certain number of days

## Job Costing (chargeable feature)

Job Costing allows transactions to be entered and assigned to a specific, pre-defined job. It uses Nominal Ledger accounts to report on the different categories of income and expense, removing the need for "cost codes".

- Job codes can be assigned to transactions in all of the standard posting routines
- Display the income and expenditure values associated with specific jobs using the Job Enquiry screen
- Display income and expenditure values against previously stated budgets
- Create, and report on, time sheets for specific jobs, showing what work has been done, by who, and at what rate
- 17 Job Costing specific reports are available, including Job Enquiry, Job Budgets, Time Sheets, Job Stock Issues and Returns, and Job Transaction Detail List

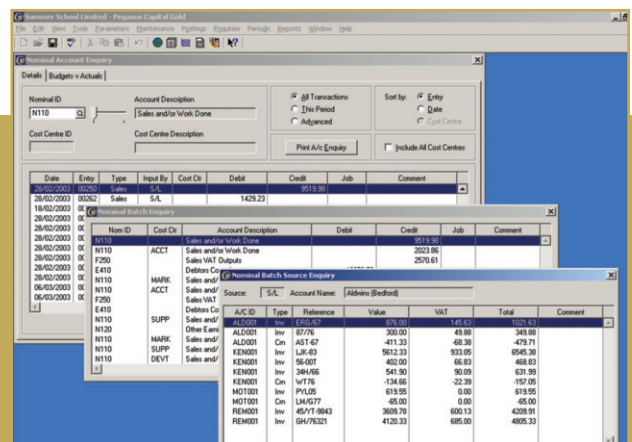


## History and Drilldown

A full History is retained of customer, supplier and product records, and is accessible via a suite of Enquiry screens.

The detail behind the summary information can be instantly accessed using the drilldown facility, allowing you to view the source transaction information from which documents are generated.

- View the detail lines that make up an SOP document such as sales order and invoice
- View the documents that were allocated to as part of a receipt, or payment, and further view the make-up of each individual document
- View the make-up of Nominal journals, and Sales and Purchase entries in the Nominal Ledger
- View the document in which a stock movement was made



## Management Information

Show your company's overall cash position using the Company Financial Status screen. An instant summary of your business includes:

- Reminders for VAT Return, Period End, Recurring Journals, Electronic Transmission, and Bank Reconciliation
- Debtors and creditors control totals
- Cash and bank account totals
- Ability to drill down to details behind Recurring Journals, VAT Liability, Receipts Due, and Payments Due
- Notes, pertinent to the current status of your business

Capital Gold allows you to select from a choice of Chart of Accounts when setting up your company, and offers you the option to either design your own Profit & Loss and Balance Sheet reports or use those provided as standard.

The Accounting Reports Wizard provides more than 180 reports, including graphical representations of the status of your business, such as cashflow forecast, aged debtors, and company, customer, and supplier turnover.

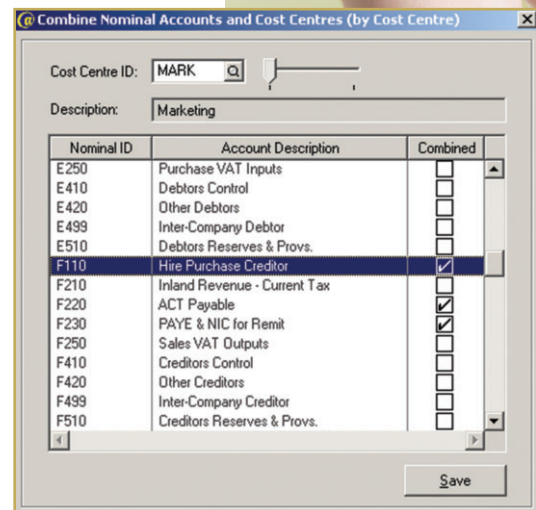
Directly transfer management information into Microsoft® products such as Word® and Excel®, or use the Accounting Reports Wizard to export information to other common formats, including CSV, HTML, RTF and TXT.

## Cost Centres

An unlimited number of Cost Centres can be created for any Nominal Ledger account.

Cost centre-based features include:

- Two quick-creation forms to allow the creation of account/cost centre combinations
- Selection of account/cost centre combinations on all relevant posting forms
- Assignment of period budgets to account/cost centre combinations
- Cost centre enquiry form
- Cost centre specific reports

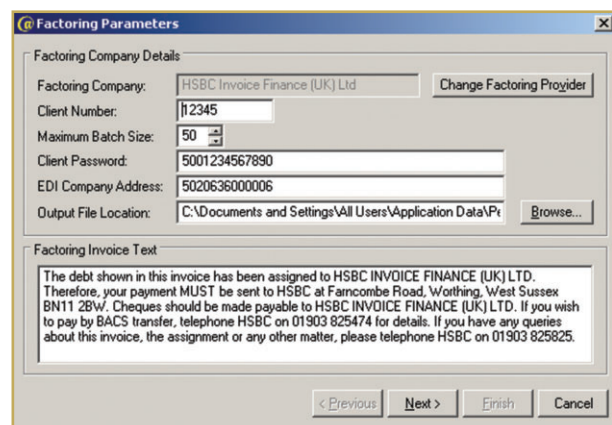


Capital Gold is so easy to use, you spend less time on daily routines and more time concentrating on growing your business.

## Factoring

For companies that use factoring, Capital Gold provides Factoring and Factoring with EDI facilities that integrate with a number of leading Factoring service providers. These facilities help a company to guarantee the timely receipt of a significant percentage of their outstanding debts as a means of more accurately predicting their cashflow. Capital Gold now includes as standard a factoring facility that provides the following features:

- Individual customers can be set up as factored
- The factored status of individual SOP invoices and/or credit notes can be changed
- The facility to produce manual factored invoices or credit notes: the documents are automatically printed with the information required by the factoring service provider
- The facility to produce electronic factored invoices and credit notes: the documents are automatically written to an appropriately formatted output file
- The facility to include or exclude electronically factored documents from the output file



# Product Features

## 1. System

- Unlimited companies with password protection
- User security
- Multi-user system: 1 user comes as standard, up to 10 users can be added (chargeable)
- Multiple company delivery addresses, with default address
- Zip-compatible Backup and Restore
- Data integrity checker
- Data conversion from CSV files
- Euro readiness, including Euro Calculator and EC Sales List
- HMRC MTD-compliant VAT Returns
- Company e-mail and web address
- Define selection criteria for user-defined reports
- Multi-field drag-and-drop from Capital Gold forms into OLE compliant applications such as Microsoft Word and Excel

## 2. Sales Ledger

- Multiple customer delivery addresses, with default address
- Customer credit terms
- Three levels of customer debtors' letters
- Detailed aged debtor reports
- Automatic calculation of settlement discount
- Sales statements
- Record and interact with customer e-mail and web addresses

## 3. Purchase Ledger

- Automatic payments are set up only once and recur based on the specified frequency
- Supplier credit terms and supplier bank details
- Identification of invoices due by a specified date
- Detailed aged creditor reports
- Automatic calculation of settlement discount
- Record and interact with supplier e-mail and web addresses

## PEGASUS CAPITAL GOLD: FEATURES AND FUNCTIONALITY AT A GLANCE

- Sales Ledger
- Purchase Ledger
- Nominal Ledger
- Cashbook
- Invoicing
- Sales Order Processing
- Purchase Order Processing
- Stock Control
- Job Costing\*
- Bill of Materials
- Report Writer
- Factoring
- Sales History/Purchase History
- VAT and ESL Reporting
- Sales Analysis/Purchase Analysis
- Bank Reconciliation
- Multiple Companies
- Multiple Users
- Electronic Payments\*
- Reverse Charge VAT
- ESL Online Submission

\* Chargeable feature

## 4. Nominal Ledger/Cashbook

- Dynamic update of Nominal Ledger, ensuring current business information is always available
- Create recurring journals for regular payments such as rent and utility bills
- Create reserves and provisions for prepayments and accruals
- Record all your payments and receipts
- Monitor and reconcile your bank balances
- Import payroll journals from Capital Gold Payroll

## 5. Invoicing/SOP

- Projected stock levels for full stock items
- Stock details updated on screen when raising sales orders, invoices, and credit notes
- Raise pro-forma invoices and quotations, and convert into sales orders and invoices later
- Re-print existing invoices and credit notes
- Invoices can be batch printed, or printed at the time of posting

## 6. Stock Control/POP

- Description Only products: records frequently used description lines to avoid retyping
- Product Only products: records details such as selling price, and available discounts
- Full Stock Item products: records details such as re-order levels and quantities, minimum stock levels, quantities in stock/on order/allocated/sold, supplier and alternative supplier, and cost price
- Global update of cost and selling prices by value or percentage
- Projected stock levels for full stock items
- Order status: view which orders are awaited from suppliers, which are overdue and which have been part-delivered

## 7. Common functionality throughout all modules:

- Flexible payments
- Re-print documents and enquiry reports whilst performing an enquiry
- Advance and part payments
- Automatic forward posting if entries are dated after the end of the current accounting period
- Spell-check appropriate text fields such as narratives and comments



**Pegasus Software** Orion House, Orion Way, Kettering NN15 6PE

**T:** 0800 919 704

**T:** +44 (0)1536 495000

**F:** +44 (0)1536 495001

**E:** [info@pegasus.co.uk](mailto:info@pegasus.co.uk)

[www.pegasus.co.uk](http://www.pegasus.co.uk)

Pegasus Software is a trading name of Infor (United Kingdom) Limited.

Registered office: One Central Boulevard, Blythe Valley Park, Shirley, Solihull, B90 8BG. Registered in England No. 2766416